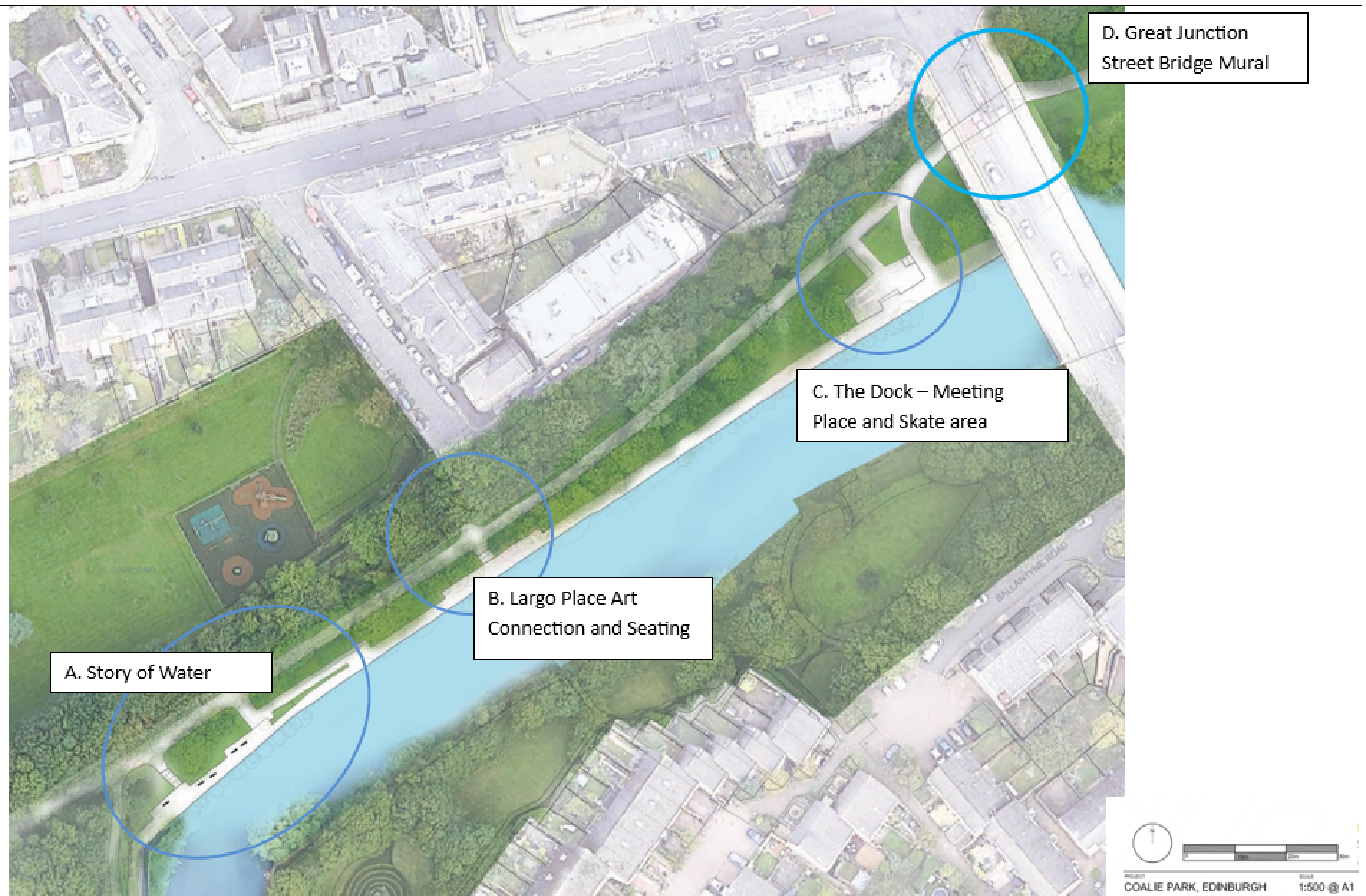


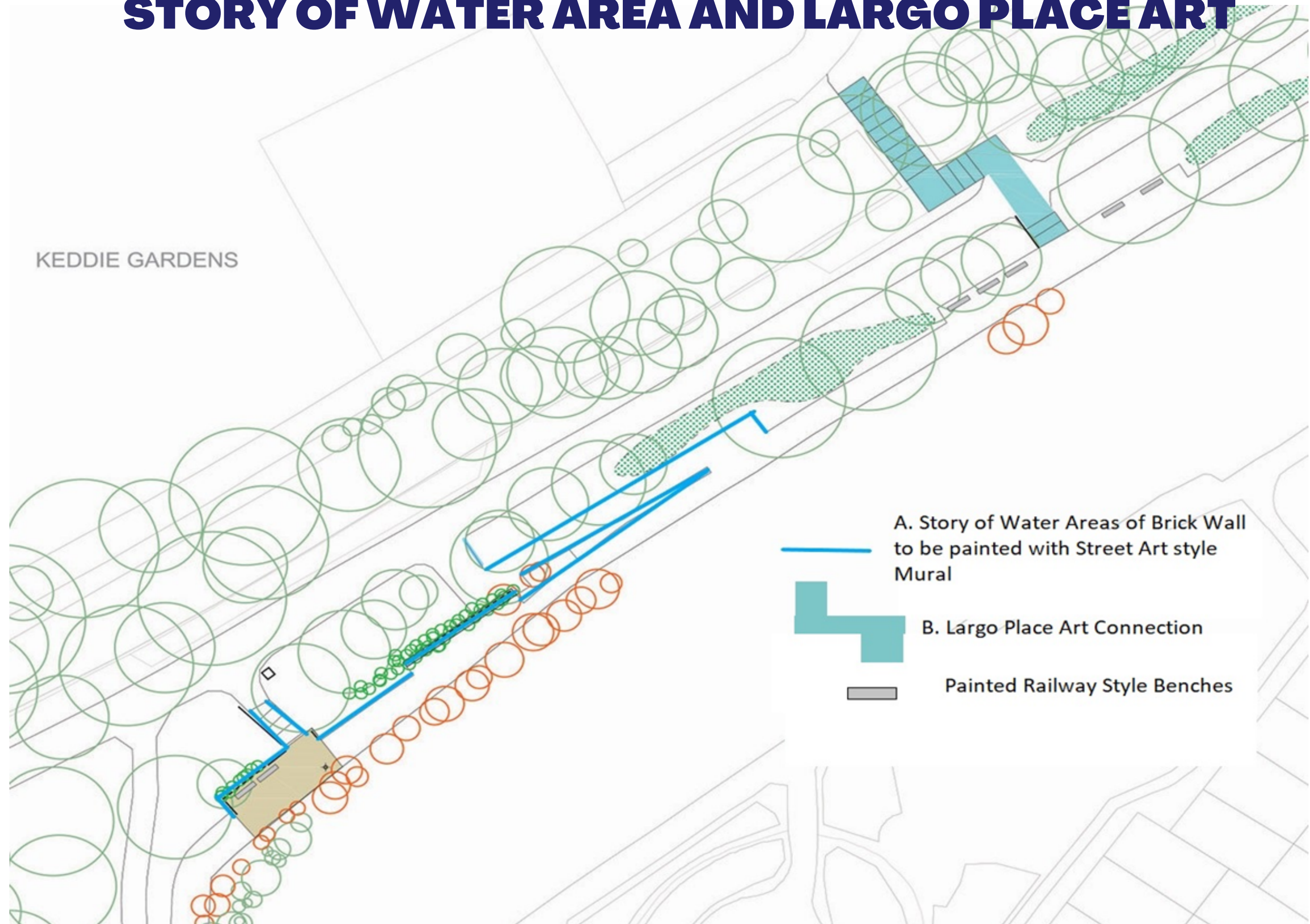
COALIE PARK IMPROVEMENT PROJECT- PHASE 2

FOUR PROJECT AREAS WEST OF THE BRIDGE



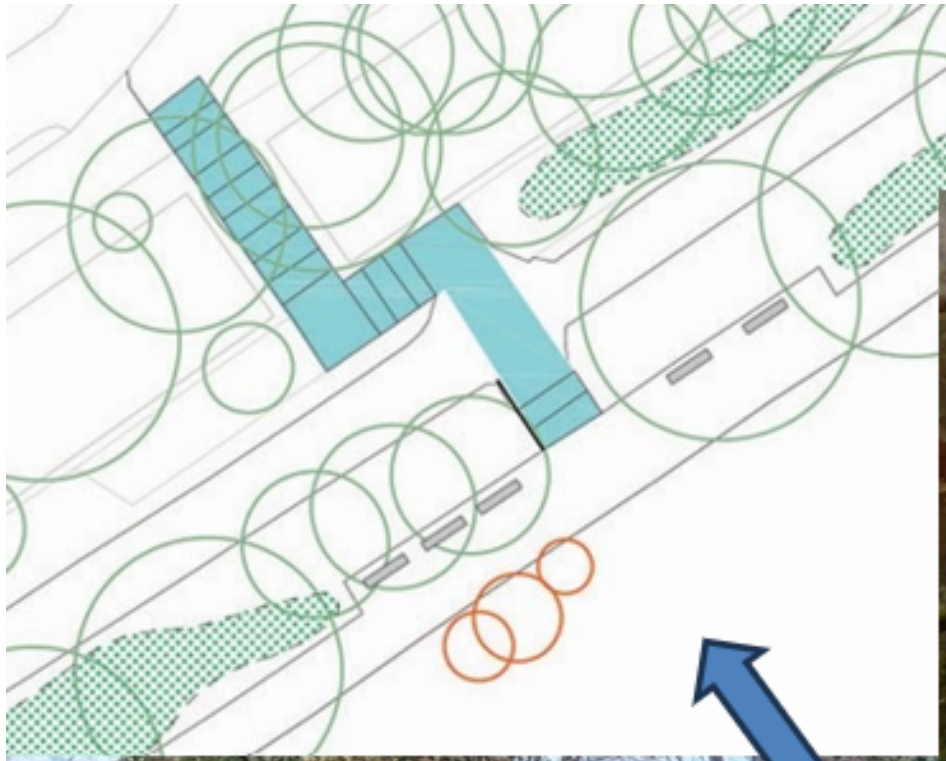
COALIE PARK IMPROVEMENT PROJECT- PHASE 2

STORY OF WATER AREA AND LARGO PLACE ART



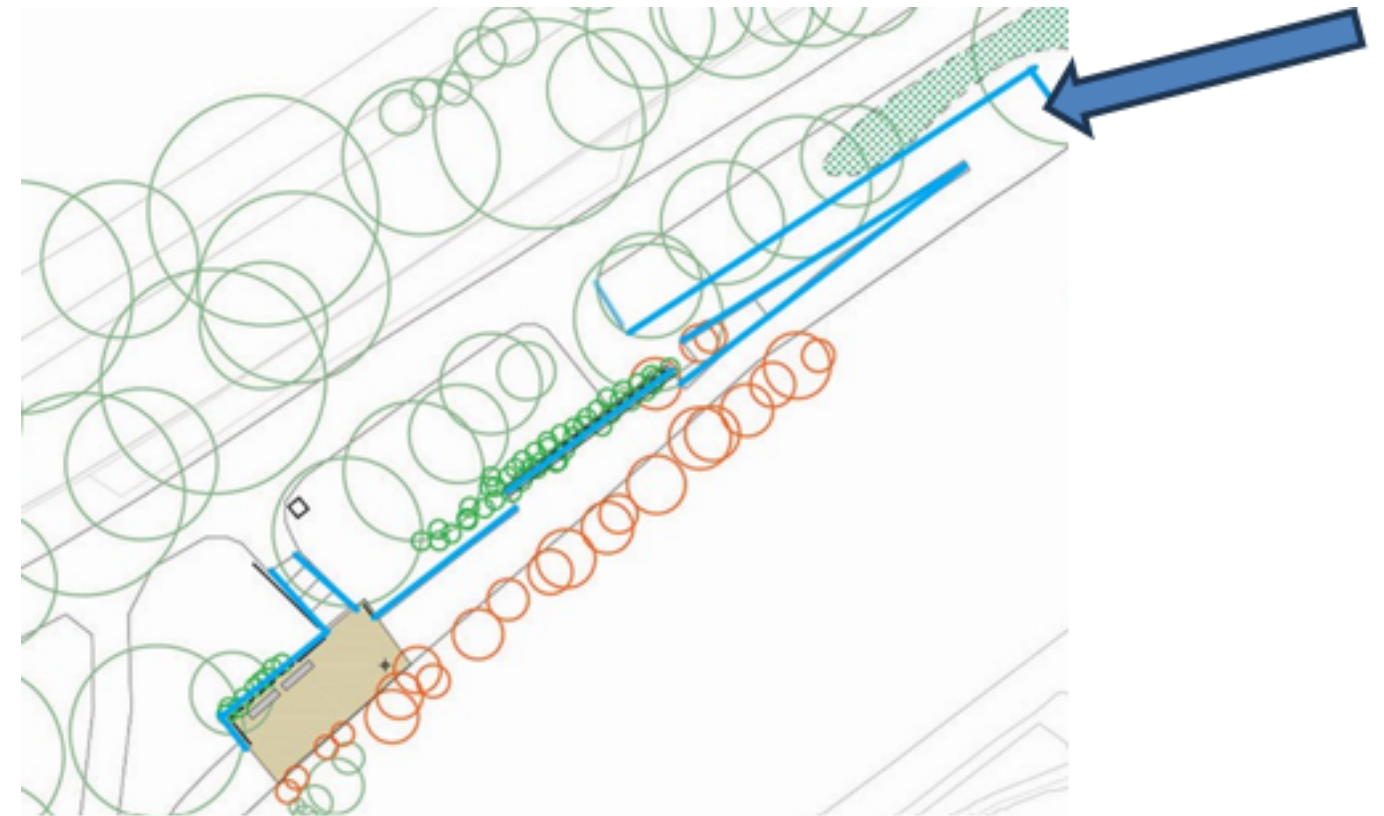
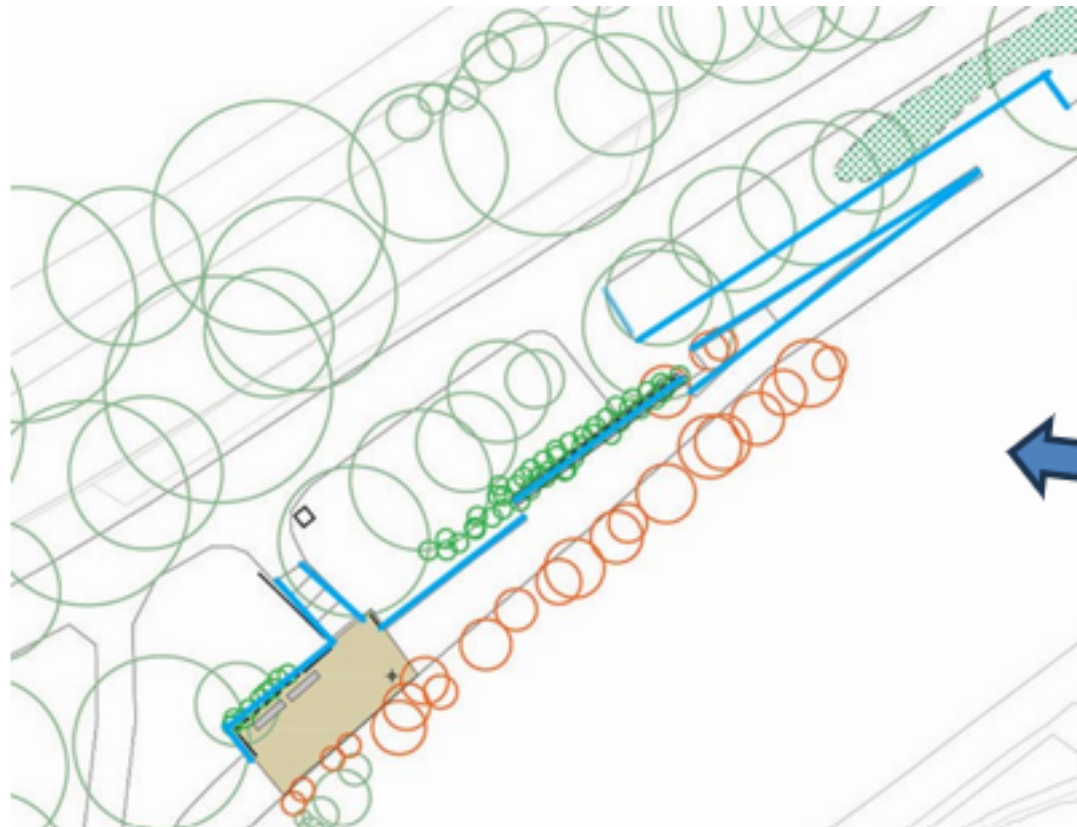
COALIE PARK IMPROVEMENT PROJECT- PHASE 2

LARGO PLACE CONNETION AND SEATING AREA



COALIE PARK IMPROVEMENT PROJECT- PHASE 2

STORY OF WATER WALLS - MURAL PROJECT



COALIE PARK IMPROVEMENT PROJECT- PHASE 2

BRIDGE MURAL AREAS



View A.
Looking East

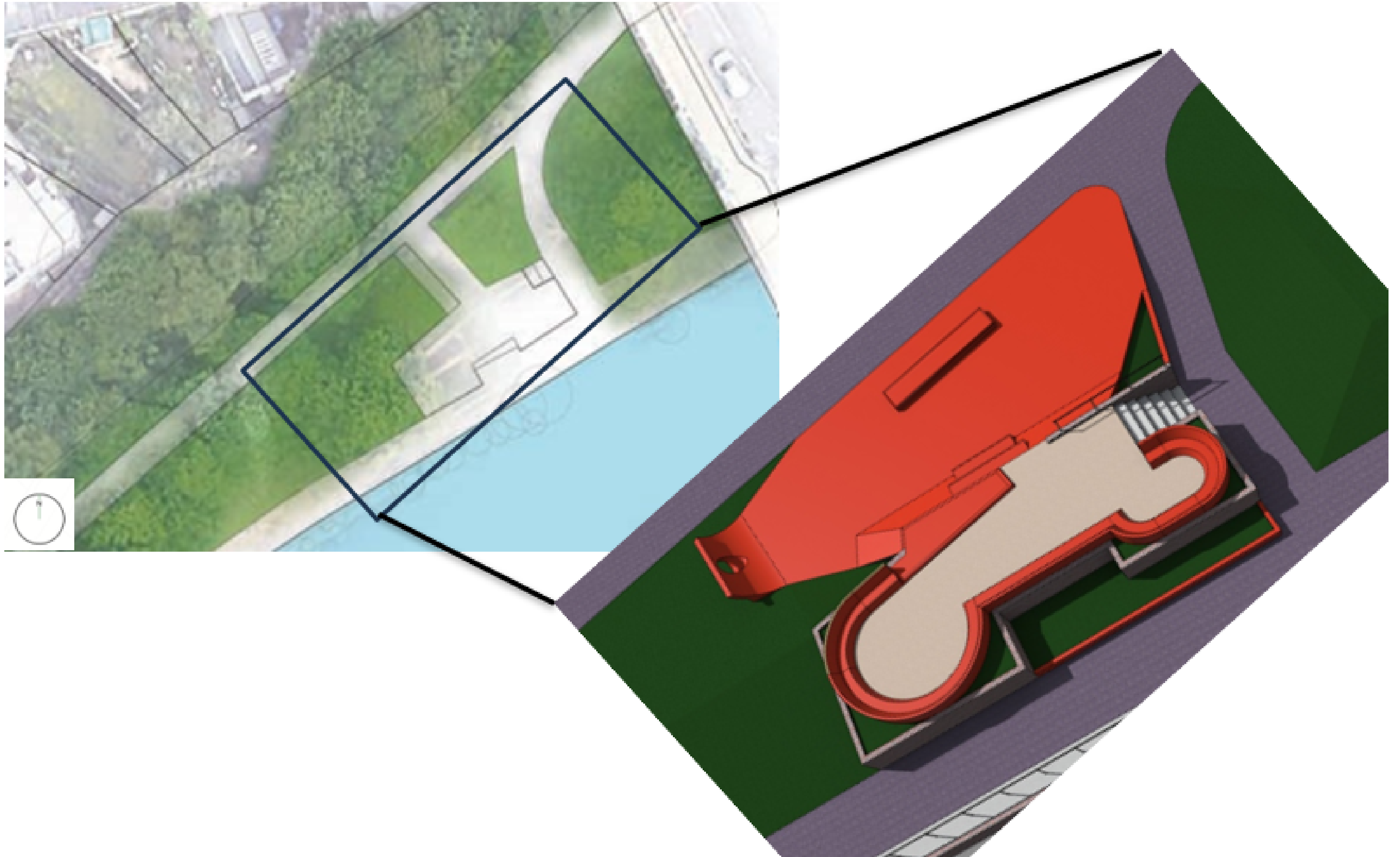


View B. Looking West



COALIE PARK IMPROVEMENT PROJECT- PHASE 2

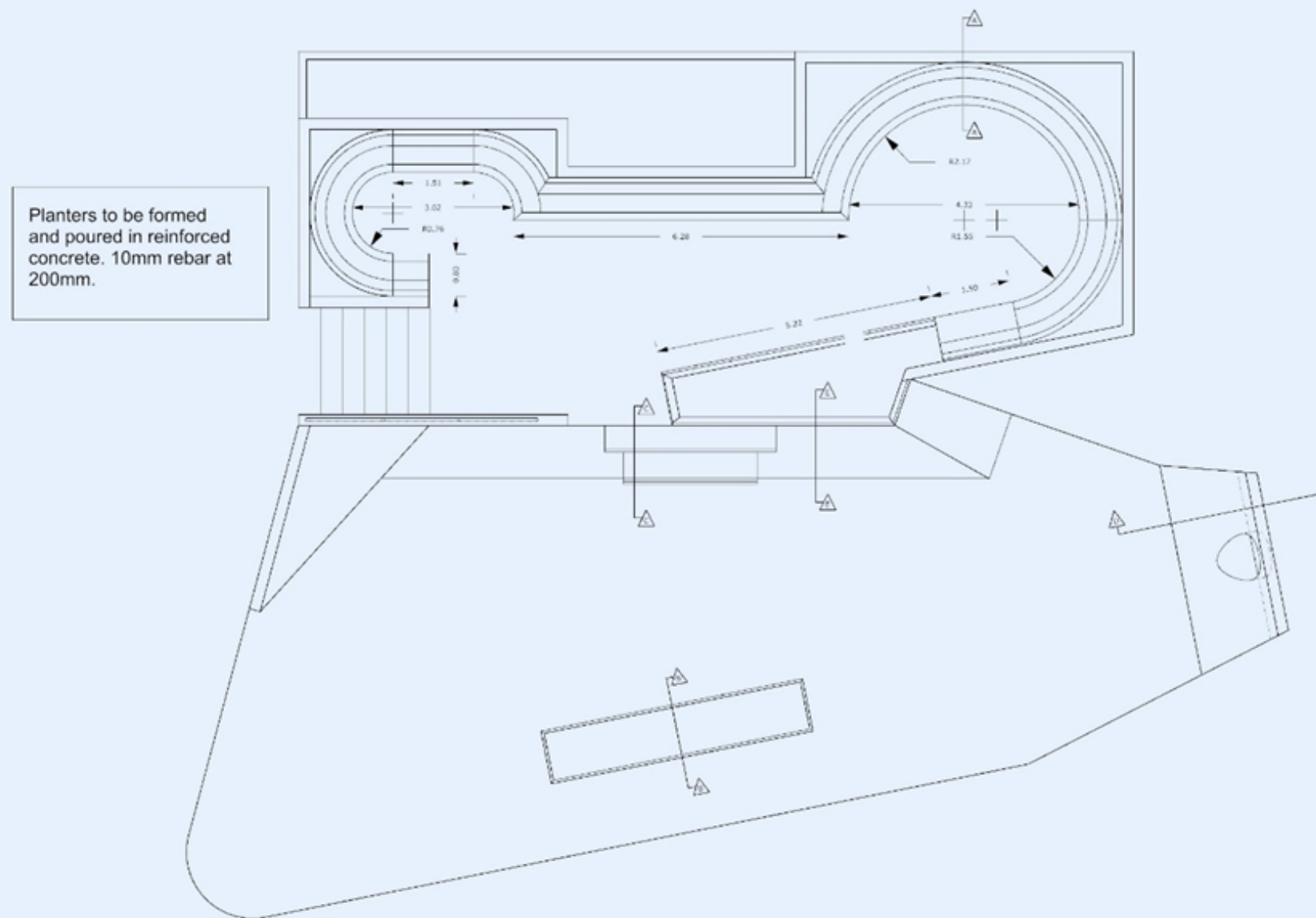
THE DOCK - MEETING PLACE AND SKATE AREA



COALIE PARK IMPROVEMENT PROJECT- PHASE 2

THE DOCK - MEETING PLACE AND SKATE AREA

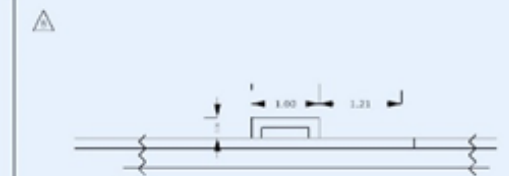
Waters of Leith - Plan 2



Bespoke benches to be formed from reinforced concrete. 10mm rebar laced at 200mm. All concrete additions to be stripped, faced, polished and edged where appropriate. All additions to be placed on a base of compacted Type 1 no less than 150mm depth.



Block to be formed from reinforced concrete. 10mm rebar laced at 200mm. 50mm angle iron edge fixed to reinforcement. All lower skateable features to be placed on compacted type 1 stone to a depth no less than 150mm.



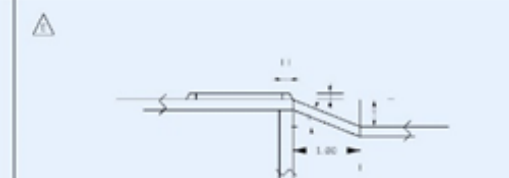
Bank to ledge/block to be formed from reinforced concrete. 10mm rebar laced at 200mm.



Fill free/cantilever quarter pipe formed from reinforced concrete. 10mm rebar @200mm + 12mm rebar starter bars and edge reinforcement tied into new floor slab with base thickening.



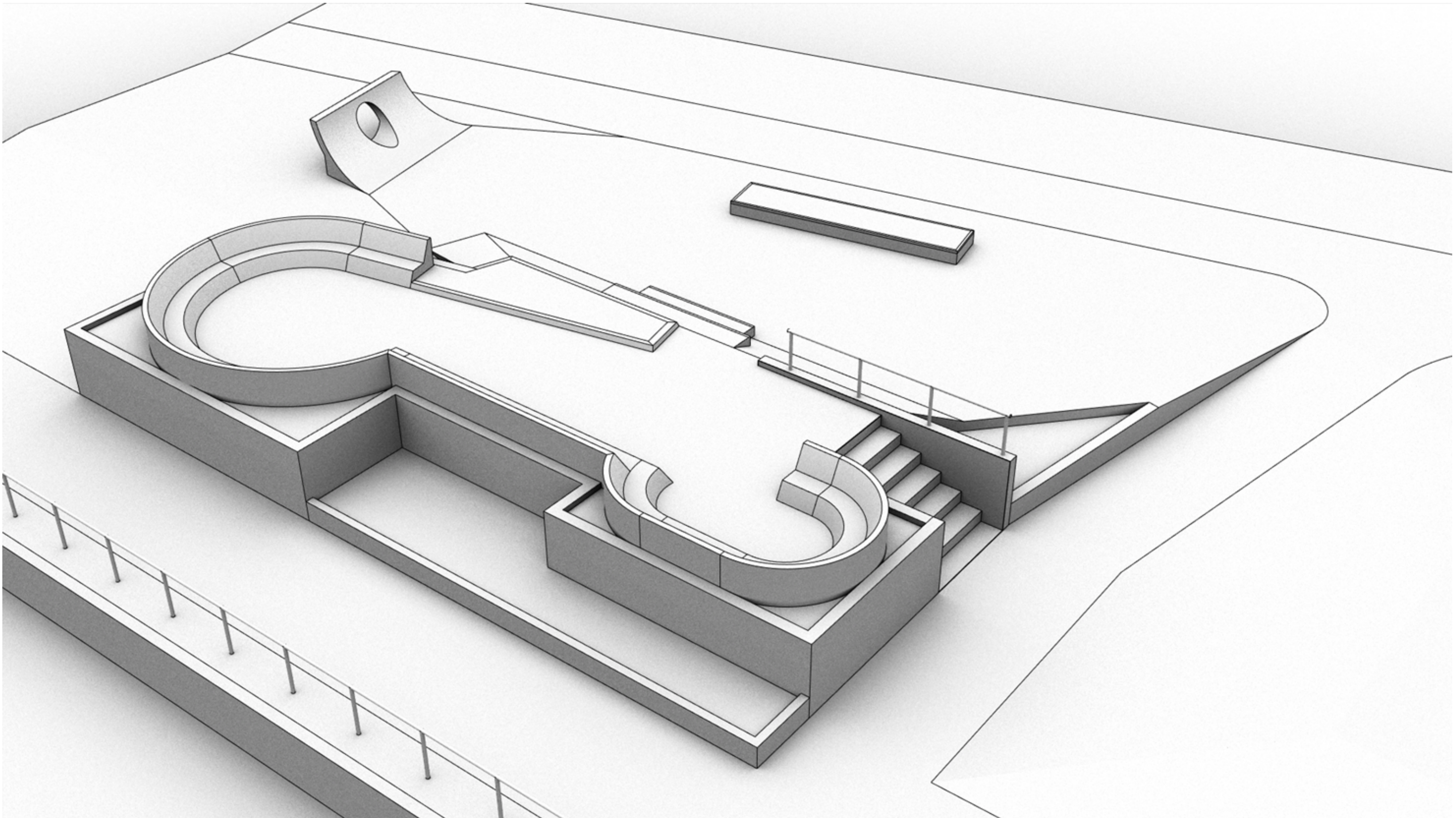
Bank formed from reinforced concrete. 10mm rebar @200mm. Kerb/pad feature formed from reinforced concrete, polished, edged and painted.



15/11/2023 - gdear101@gmail.com - @gd_dd6

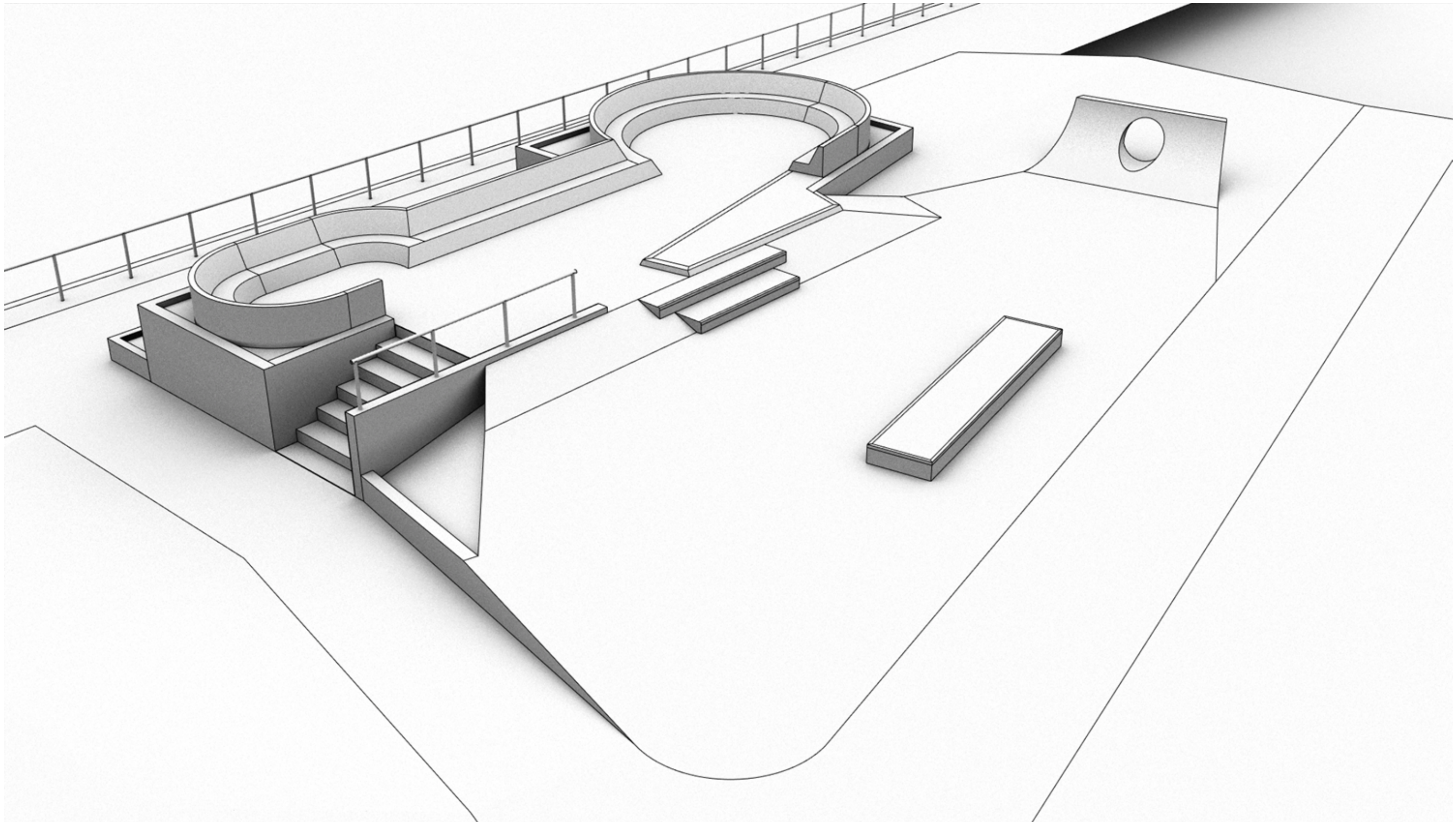
COALIE PARK IMPROVEMENT PROJECT- PHASE 2

THE DOCK - MEETING PLACE AND SKATE AREA



COALIE PARK IMPROVEMENT PROJECT- PHASE 2

THE DOCK - MEETING PLACE AND SKATE AREA



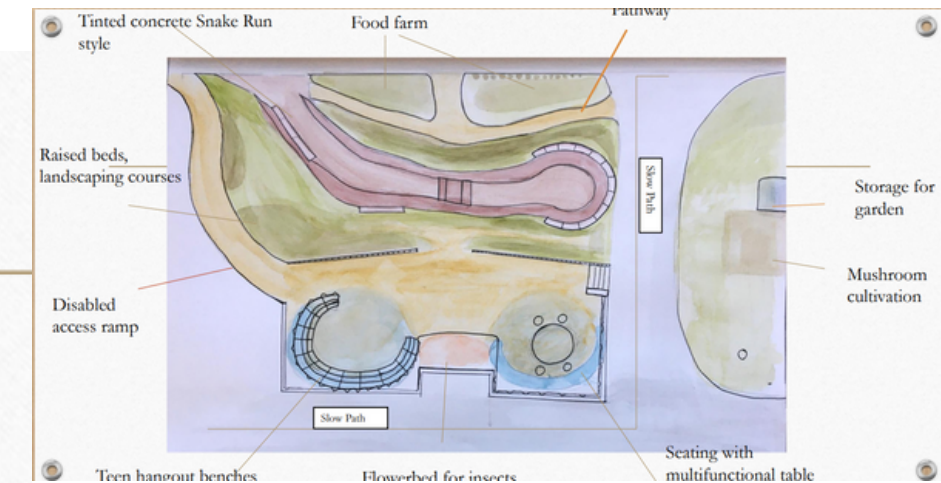
COALIE PARK IMPROVEMENT PROJECT- PHASE 2

THE DOCK - MEETING PLACE AND SKATE AREA - THEMES



Aims of project

- Create a long-lasting, sustainable community space which benefits all users of Water of Leith walkway.
- Encourage biodiversity and a connection to nature.
- Promote wellbeing and fitness through a diverse skateboarding facility.
- Have community involvement in all parts of the process.
- Encourage inclusivity amongst local teens.



Seating Area



Community mosaic benches:

Using found local materials and depicting stories of Leith's industrial history, created in collaboration with the Citadel.

Reused concrete used to create structure and mosaic tiles inserted whilst wet to create finished design effect.
Weather durable.
Promotes positive attitude.
Sense of involvement for teens.



Themes for mosaic:

Industrial heritage – rope, twine, sailmaking, wine, sugar, shipbuilding
Nature - coexisting with species in water
Youth Perspectives of Leith